



## BNSF RAIL CROSSINGS BALDWIN OPEN HOUSE PUBLIC MEETING



### BNSF RAIL CROSSINGS BALDWIN STATE PROJECT NO. H.011706 FEDERAL AID PROJECT NO. H011706 ST. MARY PARISH, LOUISIANA

**Baldwin Community Center  
305 LA Highway 83  
Baldwin, LA 70514  
July 24, 2019  
5:00 – 7:00 p.m.**

Thank you for attending this Open House Public Meeting for the proposed Burlington Northern Santa Fe (BNSF) Rail Crossings Baldwin project. In this handout you will find information about the proposed project including a preliminary project description, a location map, and a description of proposed work at each crossing location. Also included is a comment form.

Project team members are stationed throughout the room to discuss the project and answer your questions. These individuals are easily identified by their name tags. Please take this opportunity to discuss the project with team members. **There will be no formal presentation.**

As you enter the room, you will see five stations:

#### **Station 1: Sign-in Table**

At this station, there are sign-in sheets for General Public, Elected and Other Officials, Agency Personnel, and News Media. Please sign in on the appropriate sheet.

#### **Station 2: Exhibits**

This station will consist of an aerial map that illustrates the location of, and proposed work at each of the crossings. The exhibits display the entire proposed project in large layouts.

#### **Station 3: Continuous PowerPoint Presentation**

This short presentation will provide an overview of the proposed BNSF Rail Crossings Baldwin project. The presentation lasts approximately 10 minutes and will re-start automatically after a one-minute intermission. **The PowerPoint presentation and the exhibits shown tonight will be available on the DOTD website at**

**[http://wwwapps.dotd.la.gov/administration/public\\_info/projects/](http://wwwapps.dotd.la.gov/administration/public_info/projects/) in the project folder.**

#### **Station 4: Real Estate Table**

At this station, you will find information about the Louisiana Department of Transportation and Development (LA DOTD) Acquisition of Right of Way and Relocation Assistance Program, which is administered under Louisiana law in compliance with the federal laws outlined in the "Uniform Relocation Assistance Act" as amended. If you do not have the brochure explaining the Acquisition of Right-of Way and Relocation Assistance Program, it is available at this station or you can obtain one from the LADOTD District 03 Real Estate Office, located at 428 Hugh Wallis Road in Lafayette, LA 70508. Phone: (337) 262-6250.

### Station 5: Comment Table

At this station, comments can be made orally or in writing. A tape recorder is available at this table for oral comments. The last page of this handout is a comment form that you may use. Comments can be turned in during this meeting or mailed to the address on the back of the form. Additional comment forms are also available to be taken with you. **Please note that comments mailed after this meeting must be postmarked no later than August 7, 2019 to be included as part of the meeting transcript.**

**We hope you will take advantage of this opportunity to provide input on the proposed BNSF Rail Crossings project. Thank you for attending this meeting and for providing input.**

### PRELIMINARY PROJECT DESCRIPTION

The Louisiana Department of Transportation and Development (LADOTD), Federal Highway Administration (FHWA), and Federal Rail Administration (FRA) are proposing a project that includes the closure of three (3) railroad crossings along the Burlington Northern Santa Fe (BNSF) railroad and the Louisiana and Delta Railroad (LDRR) in the City of Baldwin, St. Mary Parish. Proposed activities for each of the crossings are described in the table below.

The crossings that are proposed to be closed will be complete closures. Detours may be required for the construction of the proposed connecting roads. The detours will be coordinated with the City of Baldwin at the time of construction. No relocations are anticipated. No impacts to wetlands are anticipated. It is anticipated that the project will be processed as a Categorical Exclusion.

Crossing	Preliminary Description of Proposed Work
Lockley Street Crossing	Close roadway crossing railroad. The project proposes to extend Tabb Lane, which will maintain connectivity on southwest side of Lockley Street. Remove asphalt road approaches near rail and reseed grass on affected areas.
Orphan Home Road Crossing	Close roadway crossing railroad. An existing road (Richard Street) will maintain connectivity on southwest side of Orphan Home Road Street via Haven Street. Richard Street will be evaluated (and, if necessary, modified) to make sure it can safely accommodate the additional traffic volume and type. Remove asphalt road approaches near rail and reseed grass on affected areas.
Haven Street Crossing	Close roadway crossing railroad. The project proposes to construct a roadway from Newman Street to Haven Street and northeast to Richard Street. This roadway which will maintain connectivity on southwest side of Haven Street (and Orphan Home Road). Remove asphalt road approaches near rail and reseed grass on affected areas.

DOTD is working with the City of Baldwin to maintain connectivity on the southeast side of Lockley Street, Orphan Home Road, and Haven Street. The crossings WILL NOT be closed if feasible connecting roads cannot be provided.

## **PURPOSE AND NEED**

The purpose of this project is to improve safety along the BNSF railroad corridor in Baldwin by eliminating three (3) crossings.

## **RIGHT OF WAY ACQUISITION INFORMATION**

A Real Estate representative is here at the meeting to explain DOTD's right of way acquisition procedures.

The DOTD Brochure explaining the Acquisition of Right of Way is available at Station 4.

If you have property affected by this project, we suggest you read the brochure carefully. If you have any questions regarding your individual situation, consult with the agent when he or she meets with you or contact Robert Richard, Right of Way Region 3 Manager at 337-262-6250.

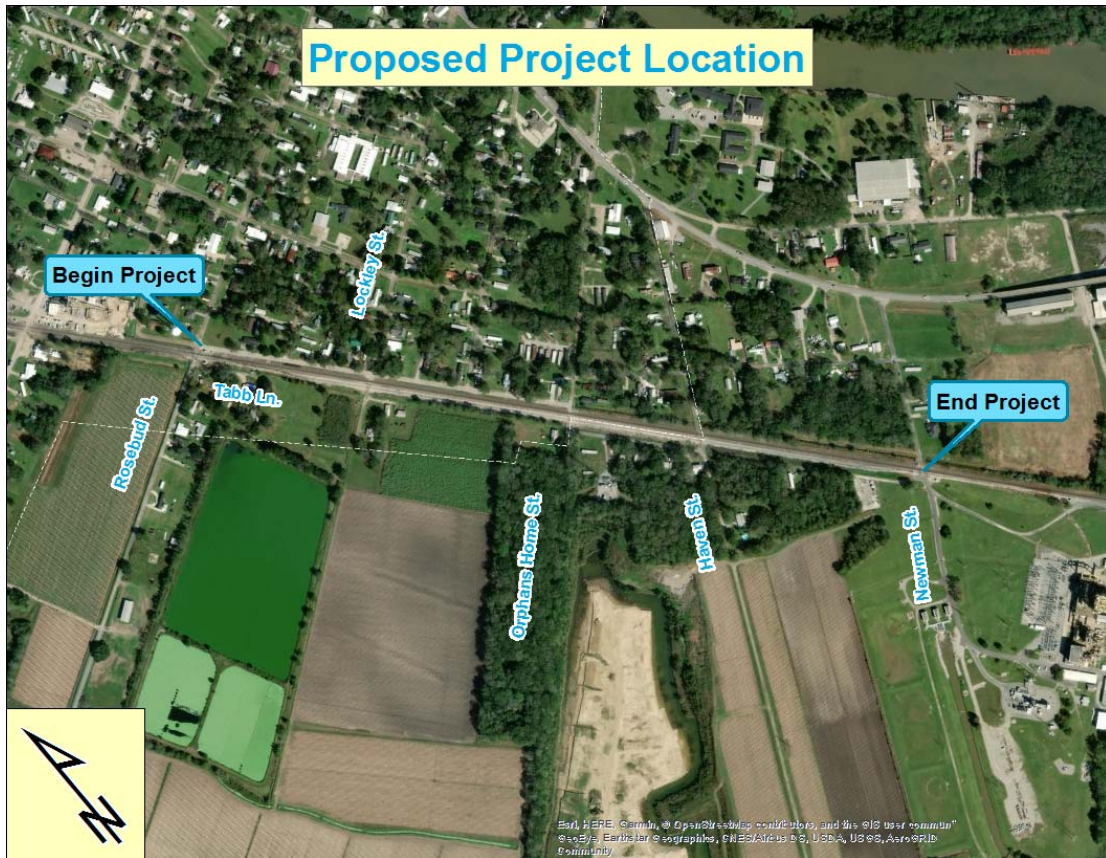


Figure 1: Proposed Project Area



Figure 2. Proposed Connecting Roads



Louisiana Department of Transportation and  
Development  
Environmental Engineering Administrator, Sec. 28  
P.O. Box 94245  
Baton Rouge, LA 70804-9245

PLACE  
STAMP  
HERE

FOLD  
HERE

---